

**The rise of cloud-based applications and IoT** is impacting existing wide area networks across all enterprises. The need to increase bandwidth availability, optimize cloud connectivity and improve security posture are difficult to address with the traditional WAN architectures of the past 20 years.

Gartner estimates that “by 2020, more than 50% of WAN edge infrastructure refresh initiatives will be based on SD-WAN versus traditional routers”.<sup>1</sup>

**Viptela brings enterprise-grade Software-Defined WAN (SD-WAN) technology to address the problems of modern enterprise applications of today and tomorrow.**

SD-WAN provides a secure hybrid overlay technology virtualizing the enterprise WAN with centralized management and control. SD-WAN cuts WAN costs by 50%, increases bandwidth 10X, eliminates outages, and expedites the deployment of cloud, IoT and other IT projects.

## Why Software-Defined WAN?

### REDUCE WAN COSTS BY 50% OR MORE

- Migrate from MPLS to Hybrid WAN
- 10x bandwidth at 50% the cost
- Optimize usage and capacity of transport

### REDUCE TIME TO CAPABILITY

- Quickly deploy new branches with any transport (LTE/Broadband/MPLS/VSAT)
- Enable new services or implement policy with centralized management
- Automate operation workflows with in-built automation

### ZERO OUTAGES FOR ANY APPLICATION

- Multiple hybrid links with active-active capability
- Real time traffic steering around upstream network issues
- Customizable SLA-based policies per-application

### CLOUD-OPTIMIZED NETWORK

- Extend WAN Seamlessly to AWS & Azure
- Optimized SaaS performance for Office 365, Salesforce and more
- Unified enterprise WAN policy for cloud and on-premises workloads

### SECURE, HARDENED NETWORK

- Robust security for the enterprise WAN independent of transport
- Reducing attack surface with segmentation for IoT, Partner networks, Cloud, Guest wireless
- On-demand insertion of Zscaler, Palo Alto and other network services

<sup>1</sup> Forecast: SD-WAN and Its Impact on Traditional Router and MPLS Services Revenue, Worldwide, Joe Skorupa | Andrew Lerner | Christian Canales, 07 November 2016

# ENTERPRISE GRADE SD-WAN AT A GLANCE



## Benefits Achieved by Viptela Customers

**80%** Reduction in Cost/Mbps for a National Insurance provider

**\$20 Million** Reduction in OPEX over 3-years for a Retailer

**5x** Improvement in Office 365 performance for an Energy Company provider

**100%** Application uptime during network failures for a National Food Distributor

**4x** Improvement in application latency for a Healthcare Provider

**12x** Improvement in change control time for 3000+ sites for a Bank

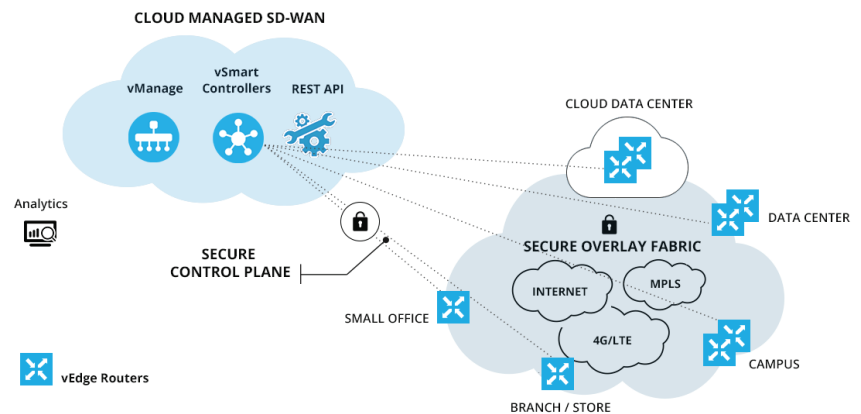
M&A integration within **2 Weeks** for a Fortune-50 Healthcare Provider

Enabled guest wireless at **1000+** stores for a retailer

Securely isolated **100+** business partners for 1000+ site US Manufacturer

## Viptela Secure Extensible Network (SEN) is the Most Deployed Enterprise Grade SD-WAN

- Largest Deployed in Retail, Healthcare, Financial Services and Energy
- Most deployed across Fortune-500 Enterprises
- Thousands of production sites in every major industry
- Compliant with PCI, HIPAA and other industry standards



Viptela SD-WAN is deployed in all major industries across thousands of sites within Fortune-500 enterprises

## How do you deploy Viptela SD-WAN

- Cloud based management
- Virtual or Physical secure routers for on-premises or cloud
- In-house IT or Managed Service with service providers or system integrators
- Capex + annual subscription licenses or Enterprise based agreements

Learn more by visiting [www.viptela.com](http://www.viptela.com)

Viptela Inc. | San Jose, California, USA | 800.525.5033